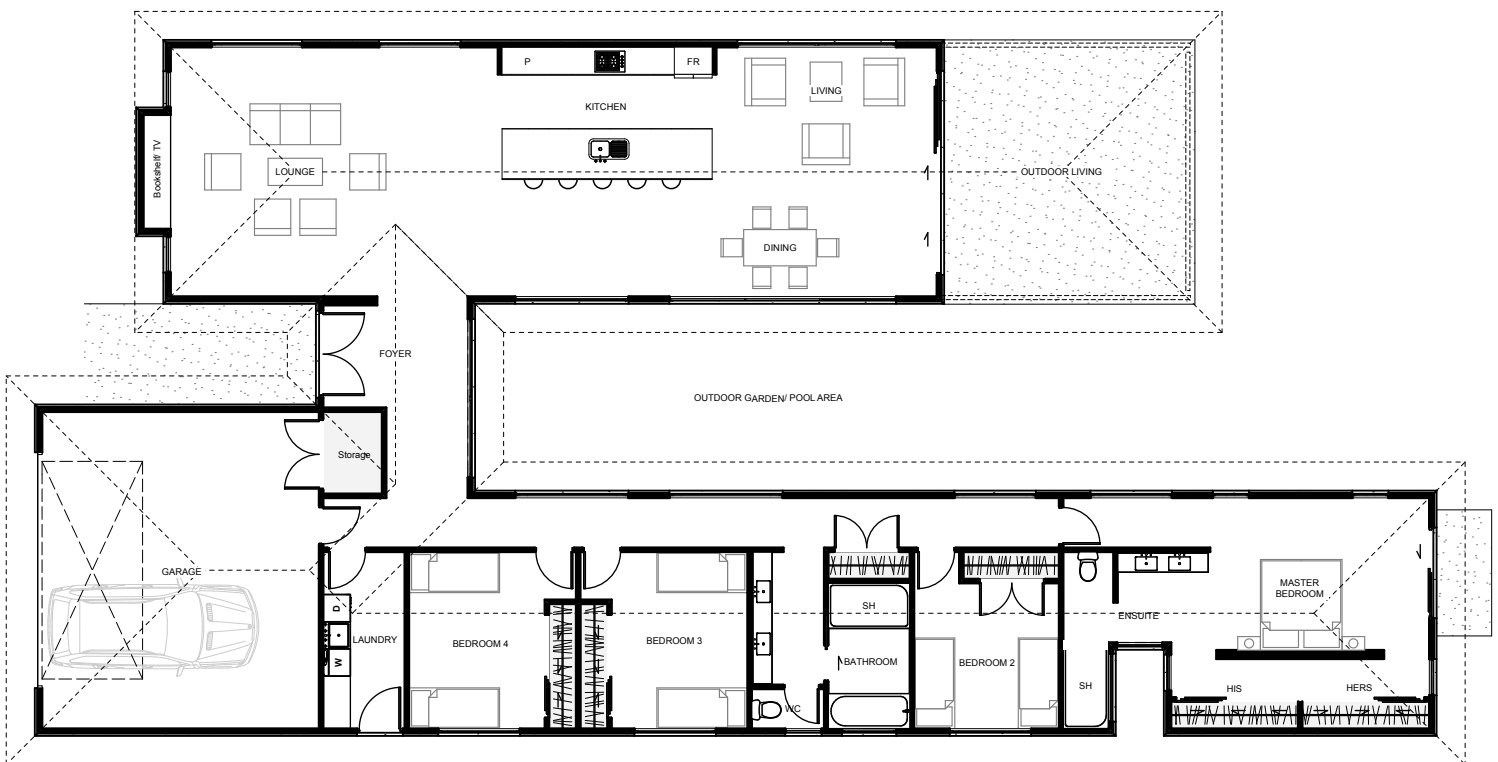


Montana



The 'Montana' is a cleverly designed 4 bedroom 'H' shaped home which separates living from bedrooms into two distinctive wings. An opening between the two wings gives plenty of space to create either a natural garden outlook or a lap pool configuration. The master bedroom is generous in size and flows nicely from the bed, through a reverse wardrobe layout to an open designed ensuite. The main living, large in size, flows seamlessly between living, kitchen, dining & outdoor living, which has great roof cover for enjoyable entertainment no matter what the weather.



Floor Area: 240m²

2
 4
 2
 30.8m
 15.0m

Contact
Adam 027 696 8462
Email: adam@thomsonhomes.co.nz
Visit us: www.thomsonhomes.co.nz

